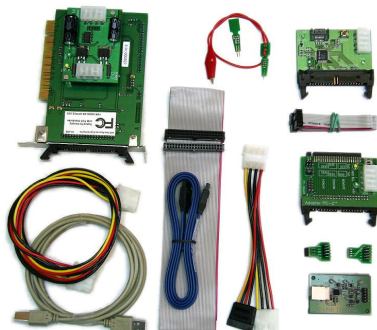


Serious gear for data recovery professionals



## PC-3000 Drive Restoration System

by ACE Laboratory Russia



### Drive restoration: where 3D Data Recovery begins

*Drive restoration is the fundamental first phase in the 3D Data Recovery process, before disk imaging and final data retrieval.*

As a data recovery professional, chances are you have ways to deal with mechanical drive failures. You may even have some success with electronic problems. But can you handle the firmware problems that cause 50 percent of all drive failures—up to 90 percent for some models? If not, you may be turning business away.

*“Before PC-3000, we were only able to fix 10 to 20 percent of the cases with firmware problems. With PC-3000, we can fix 80 to 90 percent of these cases.”*

*Jason Ball,  
Technical Manager,  
Cherry Systems*

That's why DeepSpar Data Recovery Systems offers **PC-3000 Drive Restoration System**—a set of tools developed by ACE Laboratory Russia. Now you can diagnose and fix drive-level firmware failures, as well as some mechanical and electronic issues, for almost every drive, giving you more power, more control, and in the end, more data for your clients.

### Want to get more from every drive?

**Drive not responding?** Chances are that the firmware is corrupted, or some electronic or mechanical part has failed. Even if a drive is identified by system software and appears to operate, failures with translator modules can prevent the drive from reading data. PC-3000 can solve these problems and more.

**Data imaged from a client's drive is useless?** The drive may have mislabeled sectors, returned the same content for all sectors, or only read to a certain point. This happens when a drive is not diagnosed properly, and thus is not fully operational before disk imaging and data retrieval. PC-3000 provides a range of diagnostic capabilities to get it right from the beginning.

**Don't know where the problem lies?** PC-3000 allows read and write access to a drive's ROM and system area.

You can completely view and repair all drive firmware modules:

- Microcode overlays
- HDD configuration tables
- Defects tables
- Self-Monitoring Analysis and Reporting Technology (SMART) attributes
- Security subsystem
- Adaptives and more...

With the ability to access and overwrite these modules, PC-3000 can restore the drive to the point where the data is recoverable. This feature dramatically improves data recovery success rates.

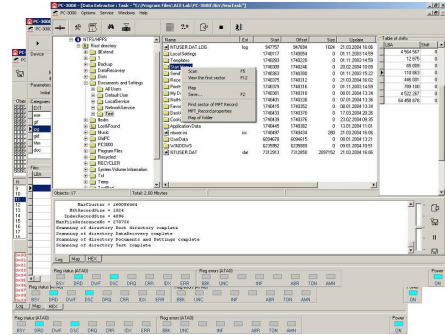
**With PC-3000, you can bring more drives back to life before you begin imaging and data retrieval.**

## PC-3000 UDMA Workstation / Kit includes:

- PC-3000 UDMA PCI card
- PC-3000 software
- 2.5" HDD adapter
- SATA HDD adapter
- Password reset probes
- PC-USB-Terminal adapter
- PC-SEAGATE adapter
- PC-SEAG. SATA adapter
- IDE, and SATA interface cables
- Cable PC-USB-Terminal
- Y-Cable (SATA power adapter)
- Cable HDD-10
- User manual
- Three months full technical support (phone and email)
- Access to online forum
- Access to database with firmware modules and loaders

## Features

- NEW! – Now Supports Full UDMA modes
- Support for 3.5" and 2.5" PATA/SATA drives of all manufacturers
- Printed circuit board (PCB) diagnostics
- Head diagnostics and head map configuration
- System area structure analysis, full read/write access and modules regeneration
- Firmware hex editing and modules database
- ROM read/write access and structure analysis
- Control of SMART attributes
- Firmware loader files support
- Hot-swap facilitation
- Application specific scripts to enhance capabilities of the system
- Drive password unlock and reset
- Self-scan repair procedures
- User-friendly Microsoft Windows XP/2000 interface



## PC-3000 Data Extractor by ACE Laboratory Russia

*PC-3000 Data Extractor is a software add-on to PC-3000 that diagnoses and fixes file system issues so you can get to your client's data.*

**File system corrupted?** When the file system is corrupted, the operating system can't see a thing—partitions, directories, and files all seem to disappear. The drive looks like it has no data. This corruption in the data structure can be caused by multiple bad sectors, damaged surfaces, malfunctioning magnetic head assemblies (MHA), or corrupted servo labels.

**PC-3000 Data Extractor performs logical file recovery** using algorithms to correct file system structure problems or even retrieve data by doing a sector-by-sector search for header files independent of the operating system.

Save time by using PC-3000 Data Extractor to selectively target the data that your client values the most.



36 Jamie Ave,  
Suite 201, Ottawa ON  
Canada K2E 6T6  
T: +1.613.225.6771  
F: +1.613.225.7766

[www.deepspar.com](http://www.deepspar.com)

©2006 ACE Data Recovery Engineering Inc. Printed in Canada.

DeepSpar, DeepSpar Disk Imager, 3D Data Recovery, and all associated designs are trademarks of ACE Data Recovery Engineering Inc. PC-3000 and Data Extractor are products of ACE Laboratory Russia, sold under exclusive license in North America by ACE Data Recovery Engineering Inc. under the DeepSpar brand. DeepSpar and ACE Data Recovery Engineering are members of the Ardenix Group.